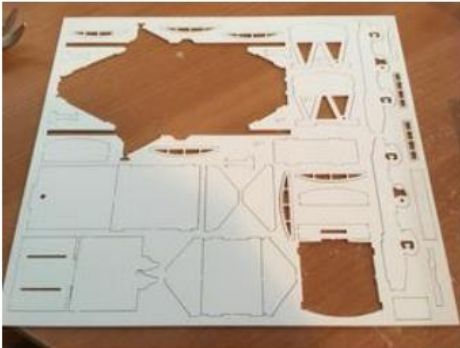




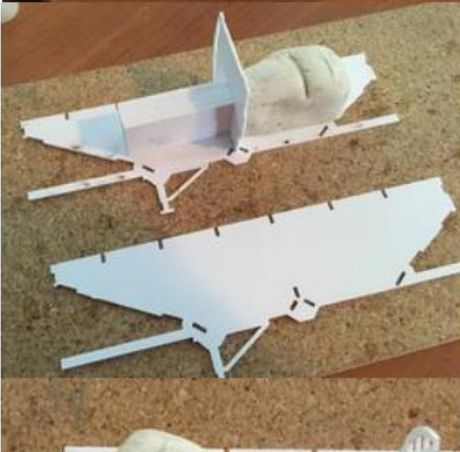
I like to sand both sides of the parts frame before removing.

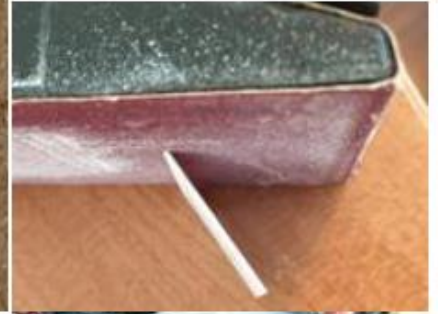
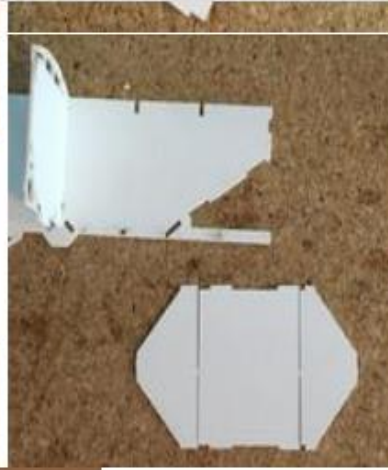


The rear is pretty much same. The rear suspension will need an angle cut off to mate up to the slope.



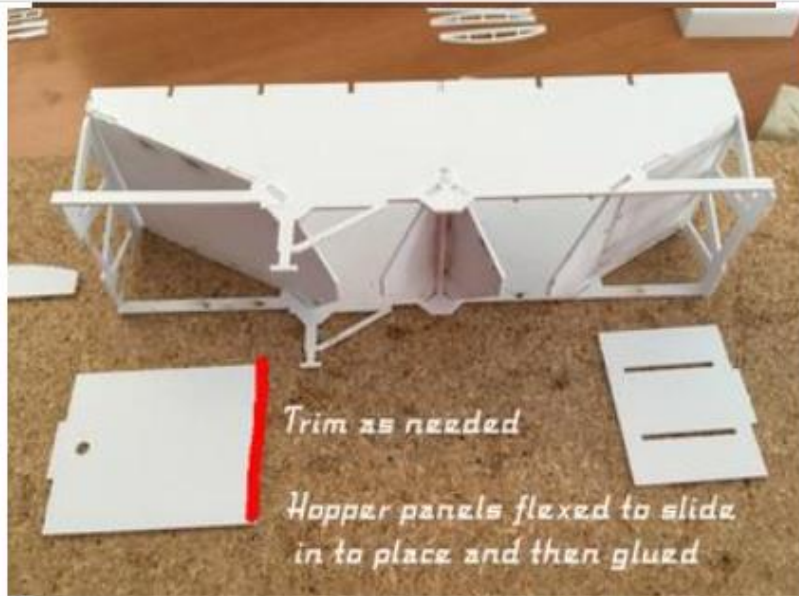
I start in the middle and then to the slopes and glue to 1 side.





Glue the 2nd side on after the middle and 2 slopes are on. Then glue the ends in.







Add in the Tarp bows and start on the thin sheet details. Check which of the hopper slope thin sheet pieces fit best. I glue then trim excess off.

Lastly add the outer skin. Paint the center side before gluing in place.